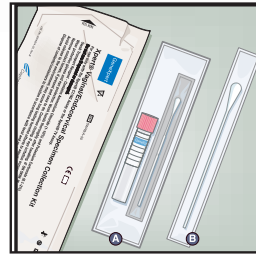
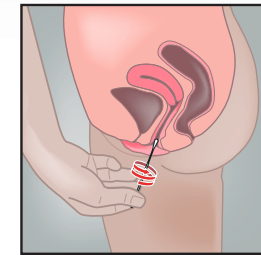


Patient-Collected Vaginal Swab Specimen Collection

1
 Wash hands before starting and undress from the waist down. Open the individual collection package **A** that contains the pink-capped Xpert® Swab Transport Reagent tube and individually wrapped collection swab. Set the tube aside before beginning to collect sample. Discard the larger swab **B**.

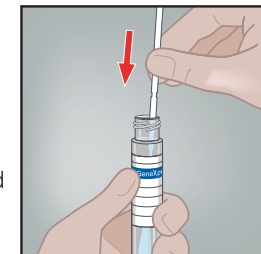


5
 Gently rotate the swab for 10 – 30 seconds. Ensure the swab touches the walls of the vagina so that moisture is absorbed by the swab. Withdraw the swab and continue to hold it in your hand.

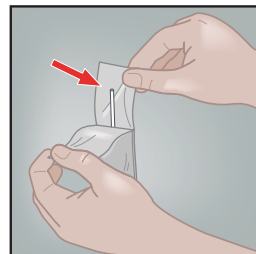


While holding the swab in the same hand, unscrew the cap from the Xpert Swab Transport Reagent tube. Do not spill the contents of the tube. If the contents of the tube are spilled, request a new collection kit. Immediately place the collection swab into the transport reagent tube.

6
WARNING: If the contents of the tube are spilled on your skin, wash the affected area with soap and water. If the contents of the tube are splashed in your eyes, immediately flush your eyes with water. Notify your doctor, nurse or care-provider if irritation develops. If the contents of the tube are spilled, your test result may be invalidated. Do not take internally.

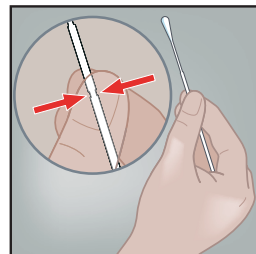


2
 Open the collection swab wrapper by peeling open the top of the wrapper.

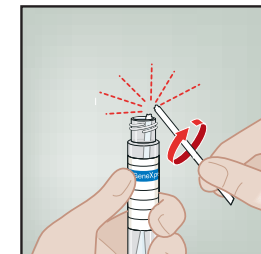


Remove the swab, taking care not to touch the tip or lay it down. If the soft tip is touched, the swab is laid down, or the swab is dropped, request a new collection kit.

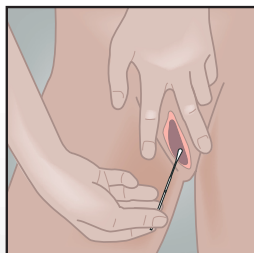
3
 Hold the swab in your hand, placing your thumb and forefinger in the middle of the swab shaft across the scoreline.



7
 Identifying the scoreline on the collection swab shaft, carefully break the swab shaft against the side of the tube at the scoreline. If needed, gently rotate the swab shaft to complete the breakage. Discard the top portion of the swab shaft. Avoid splashing contents on the skin. Wash with soap and water if exposed.



4
 Carefully insert the swab into your vagina about 5 cm (two inches) inside the opening of the vagina.



8
 Re-cap the transport tube and tighten the cap securely.

Return the tube as instructed by your doctor, nurse or care-provider.

Note: Health care provider should invert or gently shake the tube 3-4 times to elute material from the swab. Avoid foaming. Label the transport tube with the sample identification information, including date of the collection, as required.

