

Community Benefit Report 2014

In 2014, the Community Health Education Center (CHEC) celebrated five years of serving the Salem and the greater Willamette Valley. From the very beginning, CHEC has been one of the most visible signs of Salem Health's connection to the community it serves.

*From
foundation
to fruition*



CHEC

THE FIRST FIVE YEARS

When we talk about community benefit, we often talk about dollars and cents. But some benefits can't be measured in money alone. The Community Health Education Center (CHEC), a part of Salem Health, is a resource that connects people to their health on a personal, emotional level.

2009

Thanks to a grassroots campaign by the Salem Hospital Foundation to raise more than \$3.5 million, the CHEC opened in October of 2009.

The idea for the first center of its kind in the area was born when local leaders and physicians began recognizing a need for health education beyond what could be provided in the medical setting.

"We needed to move away from simply treating disease, towards preventing it," said Sharon Heuer, director of community benefit. "Some of the most serious health challenges of our time—cancer, heart disease, diabetes—can be controlled by adopting a healthy lifestyle. But people need accurate information and practical instructions to make changes themselves."

With that in mind, the mission of the CHEC was to improve the health and well-being of the community by offering:

- Health improvement and wellness classes
- Disease and injury prevention programs
- Screenings for early detection
- Education on managing chronic conditions

Community physicians saw the value their patients would get from these services and donated more than \$1 million to support building the CHEC.

Success along the way

"Thank you for helping ease my concerns about my upcoming surgery by helping me better understand the procedure."

Information Rx

"When I completed class I was walking longer, stronger and with a smile in my heart."

RISE cancer program

"We really appreciate your willingness to speak to our groups."

CHEC outreach

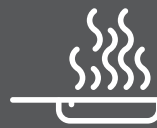
By the numbers



235,319
visits to the CHEC
from 2009 to 2014



18,293
books, magazines and
models borrowed



175
cooking classes hosted at
Gehlar Wellness Kitchen



5,338
classes, events and programs served
166,672 community members

2014

Mental health: Depression

- NAMI support group
- Recovery International support group
- Depression and bipolar support group
- Without String support group
- Postpartum depression education
- Medical transportation
- Girls on the Run program

Obesity

- 5210 program
- Weight management classes
- Cooking classes
- Physical activity classes
- Take Charge classes
- WVP partnership

Programs align with the community health priorities identified in the most recent Marion and Polk County Health Reports. We focus our resources on programs where we can do the most good.

Smoking cessation

- Freedom From Smoking classes
- Lung screening program
- Smoking cessation outreach

Hypertension

- Blood pressure screenings
- Low-sodium cooking classes
- Physical activity classes

Prenatal care

- Oregon Mothers Care partnership
- Winema Place partnership
- Free and reduced cost Childbirth Education Classes



Partnered with

230

nonprofit and government agencies



2,100

visitors had individual education with CHEC nurses and health educators



More than

400

people attended support groups each month



3,805

interlibrary book loans and

2,152

reference materials requested at the Dr. J. A. King Staff Library

● ● ● Caring for our community

Caring for our community means understanding its needs and being actively involved. Salem Health collaborates with community partners to serve those who depend on us for health care. Our investments in talent, services and outreach benefit the mid-Willamette Valley.

Health care for people unable to pay

Every year, Salem Health provides needed health care to people for whom the reimbursement, if any, does not cover the cost of providing services. Without Salem Health, many of these patients would go without treatment. In 2014, Salem Health provided over **\$96 million** in community benefit. The community benefit was distributed as follows:

- **Charity care and unmet cost of Medicaid:** The cost of treating uninsured or underinsured community members who could not afford health care totaled **\$47.7 million**. The costs include patients receiving financial assistance from the hospitals, services for patients enrolled in the Marion Polk Medical Foundation’s Project Access, a physician-coordinated care network serving uninsured and low-income community members.
- **Medicare:** Government underpayments for Medicare patients fell short of the actual cost nearly **\$39 million**.

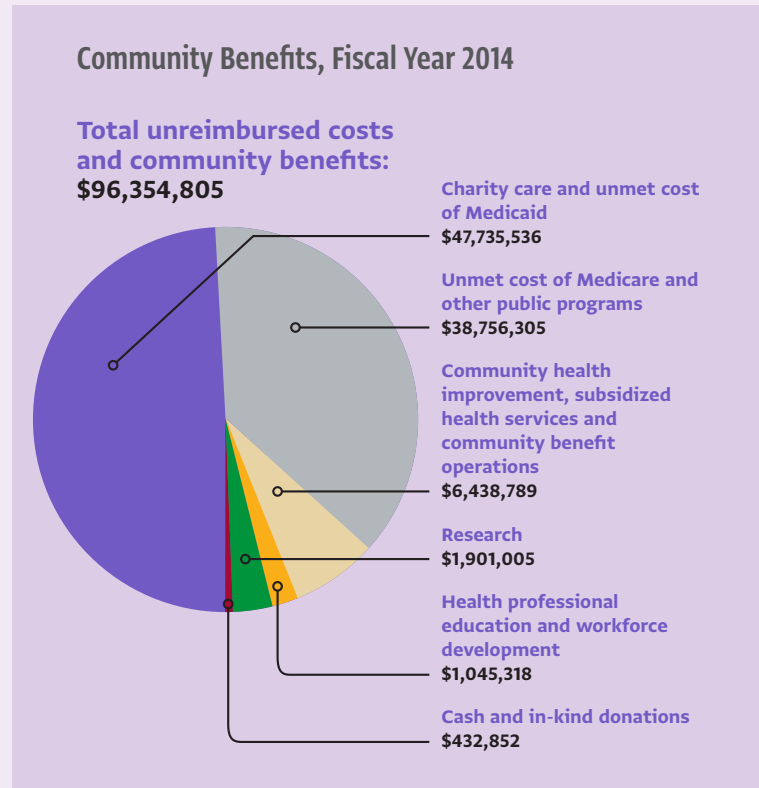
Community services

As the largest health care provider in the mid-Willamette Valley, Salem Health actively participates in services that help improve the health of the community. These services include improving access to care, physician recruiting, community health education and prevention programs. Salem Health has an active speaker’s bureau and provides health lectures to community groups, free of charge. Health screenings, support groups and education classes are offered on an ongoing basis.

In 2014, Salem Health gave **\$1.9 million** in health professional education and workforce development that may not have been available to the community if Salem Health did not provide it.

Cash and in-kind donations by Salem Health

Salem Health provides cash and in-kind donations to community programs such as Project Access, MedAssist, Community Partnership Grants and Salem Free Clinics. In 2014, Salem Health gave more than **\$432,852** in support of these and other health programs.



Source: Data from Salem Hospital and West Valley Hospital community benefit reports filed with the state of Oregon for Oct. 2013—Sept. 2014.

More information: If you have questions about Salem Health’s contributions to the community, contact the Community Health Education Center at 503-814-CHEC (2432).